

LYNNHAVEN *River* NOW

*Restoring Virginia Beach Waters*



2021-2022  
ANNUAL REPORT





## 2021-2022 Board of Directors

Bob Wells--Chairman  
 Steve Herbert—Vice-Chairman  
 Cathy Maston—Treasurer  
 Karen Forget—Corporate Secretary  
 Craig Cope  
 Jan Dillard  
 Andrew Fine  
 Barry Frankenfield  
 Lillie Gilbert  
 Al Henley  
 Brent James  
 George Kotarides  
 Harry Lester  
 Janet Pawlukiewicz  
 Joash Schulman  
 Emily Steinhilber  
 Jaketa Thompson



Cover Credit: Many thanks to board member Jaketa Thompson who took the photo of our young friends of LRNow in their Plant a Tree for Me tee shirts.

## Highlights of 2021

6,020 active Pearl Homes, 18 Pearl Faith Communities, 28 Pearl Businesses, and 103 Pearl Schools

Sustainable Yard Program did 357 site visits and installed 217 best management practices on homeowner properties in the past four years.

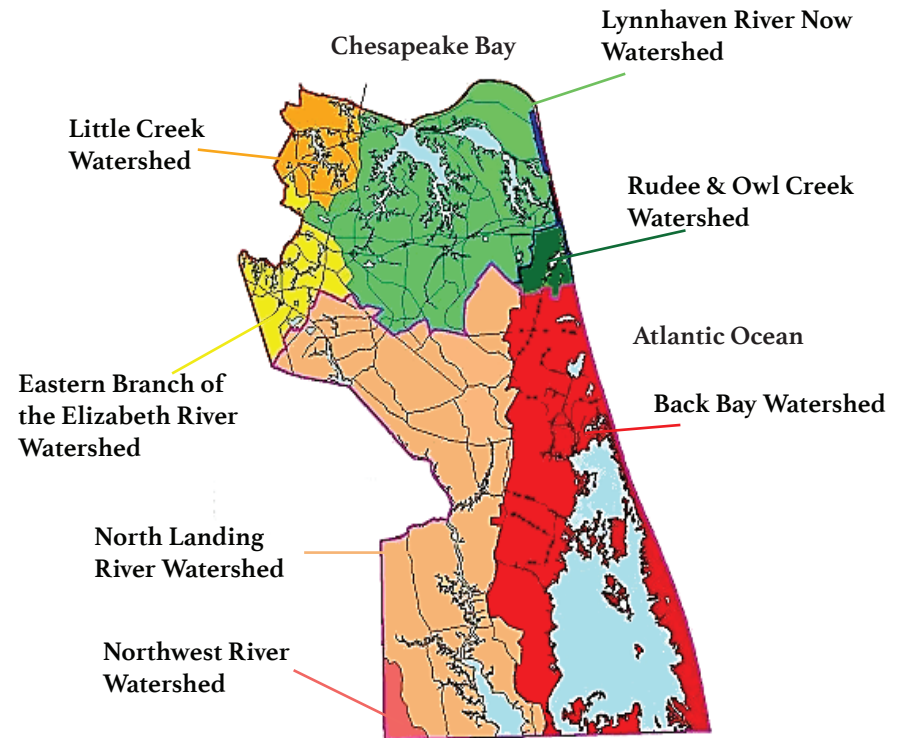
47 shoreline consultations  
 354 linear feet of living shoreline restored.

Over \$1 M in grant funding for three phases of oyster restoration in the Lynnhaven River.

750 trees planted in the Ocean Lakes neighborhood.

A net gain of 6,000 square feet of wetlands at one Wetlands Board hearing. Way to go!

Balloon Release Ban passed by General Assembly.



Over 6 tons, 12,000 pounds, of marine debris removed.

Over 1,000 communications to our supporters.

New webinars on native plants, dunes, tree restoration, plastics and more.

2002: LRNow Founded by Andrew Fine, Bob Stanton, and Harry Lester

2002: DIA Helped to Create Our Brand and Launch our Organization



## Dear Members and Friends,

In 2002, with the degradation of the Lynnhaven River apparent and documented in a feature edition of the Virginian Pilot, three friends, Andrew Fine, Harry Lester, and Bob Stanton, made the decision to try to do something to restore the river and bring back the Lynnhaven Oyster. It was their commitment and vision that was the beginning of Lynnhaven River 2007. They brought together concerned citizens, city leaders, and experts in many fields to build a program to restore the river.

The initial goal was to reduce bacteria levels and open some part of the river to safe oyster harvest again by 2007. That goal was reached and at our Oyster Roast in April 2007, we ate oysters from the Lynnhaven River for the first time in decades. Today, almost half of the Lynnhaven meets the rigorous water quality standard for oyster harvest and is still the only urban waterway in the state open to shellfish farming.

By 2007, it was clear that our work was just beginning. Our name was changed to Lynnhaven River NOW and we broadened our goals and programs. Our first Pearl programs started in 2007 and now form the core of our education and outreach efforts. Today, over a hundred schools participate in our Pearl School program and over 6,000 families are Pearl Homes.

It also soon became evident that what worked in the Lynnhaven could benefit all of our waterways and our work expanded to encompass the entire city with our many and varied waterways and natural areas. Today, we work with citizens and neighborhoods throughout the city to restore native plants and trees, to protect natural areas, to reduce marine debris and improve water quality, and to prepare for the challenges of sea level rise and increased flooding.

No one would say that the past two years have been easy, but we have adapted and continued to expand our work and grow our programs. Our staff and volunteers have been flexible and shown tremendous commitment to our goals, to our city, and to our shared vision.

This year, we celebrate our 20th Anniversary! And there is so much to celebrate. We have come a long way in the past twenty years from three people's vision to a vibrant organization working every day to make our city a better place for us and for our children and grandchildren.

Thank you for everything that you do to support this important and successful work.

Karen W. Forget

## Staff

**Karen Forget** - Executive Director

**Helen Kuhns** - Assistant Director for Pearl Programs

**Dominique Denson** - Administrative Assistant

**Emily Bodsford** - Pearl Program Assistant

**Mike Hall** - Bookkeeper

**Brian Sagedy** - Development Director

**Morgan Schmidtendorff** - Communication Coordinator

**Mary Reid Barrow** - Nature Notes and Communications

**Jim Deppe** - Advocacy Coordinator

**Vince Bowhers** - Conservation Landscape Coordinator

**Brent James** - Oyster Projects Coordinator

**Tom White** - SOS Program Manager

**Clay Bernick** - Restoration Project Coordinator

**Terri Gorman** - Pearl Home Coordinator

**Jody Ullmann** - Pearl School Coordinator

**Stacey Shiflet** - Pearl Business Coordinator



2003: First Committees Established

2004: Started the Scoop the Poop Campaign

2005 : Home and Garden Show Exhibit



## Pearl Neighborhoods

Congratulations to the following neighborhoods who have achieved this status:

**Pine Ridge**

**Atlantic Shores Retirement Community**

**Lynnhaven Dunes Condominiums**

**Westminster-Canterbury on Chesapeake Bay**

**Baylake Assisted Living**

If 30% of the homes in a neighborhood become Pearl Homes, and the neighborhood takes on a neighborhood wide project and a neighborhood education program, they qualify as a Pearl Neighborhood.



## Pearl Homes

Our first families joined this program in 2011 and in ten years, we have surpassed 6,020 amazing families dedicated to continuing to learn more all the time about what they can do to reduce their energy consumption, reduce their waste and use of plastics, as well as reducing their stormwater runoff and protecting our natural resources. Pearl Home families are planting trees, building rain gardens, and installing rain barrels.

Covid reduced the number of outreach opportunities, but we adapted, and you responded. Through social media, civic league newsletters, zoom meetings, and popup neighborhood events, in 2020 and 2021, we added almost 1,000 new families to the Pearl Home program.





## Pearl Businesses

One of our Pearl Businesses wanted to stop using styrofoam carry out containers, but cardboard and compostable items were more expensive. He added a small charge for carry out containers to cover the extra cost and received nothing but praise from his customers. They were happy to pay a few cents and avoid styrofoam containers. This is just one example of the great ways that businesses are discovering how to make their practices more environmentally friendly.

Our Pearl Businesses are all finding that improvements to landscaping that add native plants and reduce storm water runoff or adding rain barrels or installing new energy saving technology are helping their businesses be more profitable while also helping reduce waste, control flooding, and protect our natural resources. And their customers are noticing!



## Congratulations to Our Pearl Businesses

1701 Virginia Beach Coworking  
Runnymede Corporation  
ABC Contracting  
Cavalier Golf & Yacht Club  
State Farm - Pierre Granger  
Port & Starboard  
Croc's 19th Street Bistro  
Doc Taylors  
Dough Boys  
Eco Maniac  
EquiKids and Equivets  
Fathom Coffee  
Flint Marine Construction  
Great Outdoor Provision Company  
LL Bean  
Harvest  
Long & Foster Coastal Properties  
Wild Works of Whimsy  
MSA, P.C.  
Tautogs  
The Nature Bus  
The Pearl at Marina Shores  
Tidewater Staffing  
Three Ships Coffee  
Westminster Canterbury at Chesapeake Bay  
Wetlands Studies and Solutions  
Chesapeake Bay Distillery  
WPL Site Design  
Matt Abbott State Farm Insurance  
First Landing Financial  
VA Beach Surf and Rescue Museum  
The Pink Dinghy  
Pender and Coward

2007: First Television Ads

2007 : Eating the First Oyster from the Lynnhaven

2007: First Pearl Schools Certified



## SOS Restaurants

The restaurants below collected over 5,000 bushels of shells in 2021 for our SOS program. All of the shell is reused to build oyster reefs in Virginia Beach. It takes about 9,000 bushels of shell to build an acre of reef. We built the Mary Louise Crutsinger Gayle reef in 2021 with SOS shell and are planning a project in Linkhorn Bay in 2023.

Please thank these restaurants for their extraordinary efforts:

1608 Crafthouse  
Abbey Road Restaurant  
Captain George's Seafood Restaurant  
CP Shuckers (Oceanfront)  
CP Shuckers (Bayside)  
Virginia Beach Dockside Seafood & Fishing Center  
Lucky Oyster  
Ocean Eddie's Seafood Restaurant  
Rockafeller's Restaurant  
Sheraton Oceanfront Hotel  
Steinhilber's Restaurant  
Tautog's  
The Atlantic on Pacific  
Simple Eats Restaurant

You can help out too, by dropping your shells off at one of these locations when you enjoy oysters at home or organize an event.

The Virginia Aquarium & Marine Science Center  
(East Parking Lot)  
Brock Environmental Center (By the Street)  
Welton's Seafood Market on Laskin Road

Please make arrangements with us ahead of a community event and we are happy to provide containers for the shells and pick them up after your event.

## Oyster Restoration

Oyster restoration has been a part of our work at LRNow since 2002 and continued to be a focus over the past two years.

Oysters are a keystone species in our marine ecosystems and critically important in a variety of ways. They clean the water, removing sediments that affect clarity and underwater vegetation, and they build reefs that provide habitat for many other species. Fishermen love oyster reefs because that is where the fish hang out.

We have a goal of 152 acres of sanctuary oyster reef in the Lynnhaven River. That has been determined to be the threshold needed to sustain our native oyster population. We are on our way to reaching that goal. In 2021 and into 2022, we will be building 25 more acres of sanctuary oyster reef in the Lynnhaven River.

All of the projects pictured here were completed in 2021.



Enthusiastic and hard working volunteers repairing the Laila Reef on Broad Bay Island



Dedicating the Mary Louise Crutsinger Gayle shell reef in the Eastern Branch of the Lynnhaven



We collected almost 9,000 bushels of shells in 2020 and 2021! Enough to build an acre of reef.



The Laramie Oyster Castle Shoreline Reef



Building the Mary Louise Crutsinger Gayle reef

2008: Lynnhaven Established as a No Discharge Zone



## Advocacy

Working with our elected officials and our community leaders on good environmental policy has been a priority for LRNow from the beginning and remains a priority today.

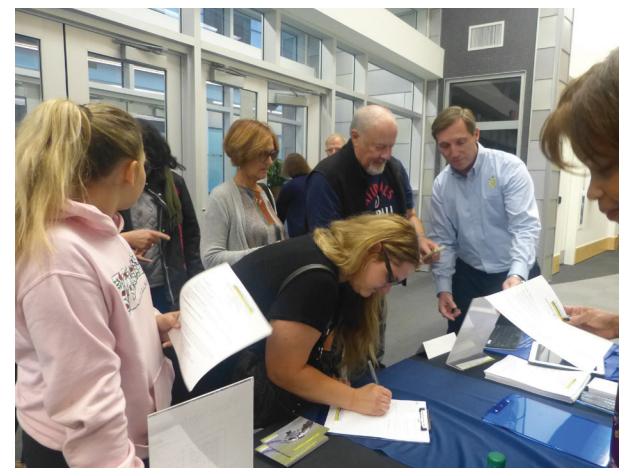
Everything we work on in public policy is tied to our other work. For example, we have dedicated volunteers who hold cleanups every month. Last year, we removed over six tons, 12,000 pounds of debris, from our waterways and wetlands in one year. But we would be doing only part of the work if we were not working to prevent this trash from getting into our waterways.

Through our advocacy, we have eliminated balloon releases, supported a ban on polystyrene food containers, and worked to get authority to charge a fee for plastic bags. You will be hearing more about that in 2022. And we continue to work to reduce single use plastics through our Pearl Programs and our trash free events.

To help protect our area against sea level rise, we not only advocate for tree protection legislation, but we also have planted 750 trees in low lying areas of Virginia Beach and have produced tree care and education webinars.

At the federal level, we continue to work to secure permanent protections against offshore drilling.

And we are working at the state level to protect the programs and the funding sources that help us to prepare our homes, businesses, and neighborhoods for sea level rise and increased flooding risks. Every fall we give you an opportunity to ask our candidates your questions related to our important environmental issues. Watch for our City Council candidate forums in fall 2022.





## Our Pearl Schools Won Three Awards

Our Pearl School programs are being recognized far and wide for their excellence.

### International Green Apple Day of Service Award

In March of 2020, The Garbage to Glam project with First Colonial School received the International Green Apple Day of Service Award (in the Creative Approach category) from the US Green Building Council. This award recognizes outstanding K-12 sustainability service projects and leaders from around the world.

### Model Partnership Award

In March 2021, LRNow was awarded one of eight Model Partnerships. This award, given by the VB-CPS Family and Community Engagement Office, applauds LRNow's dedication to excellence in their partnership with First Colonial High School, both the Green Club and the Theater department.

### National Green Difference Award

In April 2021, LRNow received the Project Green Schools National Green Difference Award for the Growing Wetlands in the Classroom Program.



## Pearl Schools

Pearl Schools are vibrant learning environments where students and teachers are immersed in good environmental education and outdoor learning experiences. During the 2020-2021 school year, 103 schools in Virginia Beach received the Pearl School Award.

The past two years have been challenging for our students, families, and teachers. We have adjusted our programs during this time to assist teachers and families with things that would be easy to implement. Our preschool programs were turned into take home kits and we offered virtual lessons for classes.

During this time, we also explored new partnerships with Faith Communities and Virginia Beach Parks and Recreation to bring outdoor programs to children and families.



2008: US Army Corps of Engineers Oyster Reefs Built

2008: River Cleanup Program Begins



## Cleanups and Citizen Science

So much good work is being accomplished by our incredible volunteers as Spat Catchers, Water Quality Monitors and our intrepid cleanup volunteers.



### Cleanups

Even with covid restrictions, in 2021, our volunteers did 68 cleanups and removed over 12,000 lbs, 6 tons, of debris. In all weather, they are working hard to keep our waterways and wetlands free of trash.

### Spat Catchers

Spat Catchers support our oyster restoration work in two ways. First, they collect baby oysters on the substrate in their cages that can be placed on sanctuary reefs. And second, they help us test various types of substrate to determine which are most effective. We hope to double this program in 2022.



### Water Quality Monitoring

Our water quality monitors are out every month collecting samples that provide us with valuable data on a wide range of pollutants. In 2021, they collected 222 samples. We look forward to expanding this program in 2022.

## Pearl Faith Communities

Despite the challenges of covid, these faith communities continued to move forward with landscaping, solar, and rain barrel projects last year. We applaud you!

All Saints' Episcopal Church  
Baylake United Methodist Church  
Bayside Christian Church  
Chalice Christian Church  
Church of the Holy Family  
Community United Methodist Church  
Coastal Virginia Unitarian Universalists  
Eastern Shore Chapel  
First Presbyterian Church of Virginia Beach  
Friends Meeting  
Grace Bible Church  
Kings Grant Presbyterian Church  
Lynnhaven Colony Congregation  
Nimmo United Methodist Church  
Ohef Sholom Temple  
Old Donation Episcopal Church  
St. Aidan's Episcopal Church  
Thalia United Methodist Church



2009: Partnership with Buy Fresh, Buy Local Begins

2010: Oyster Gardeners Program Launched

2009: Governor's Environmental Excellence Gold Award



## Nature Notes by Mary Reid Barrow

### LRNow has plenty to celebrate in its 20th anniversary year!

I first met a Lynnhaven oyster when I was a little girl in Richmond and my grandfather led the men in the family in his traditional back-porch holiday-shucking-and- eating feast.

My grandfather, Richard Burroughs, moved from the area to Richmond as an adult but my Great Uncle Ben Burroughs still lived on the Lynnhaven River. Every Thanksgiving and Christmas, Uncle Ben and his wife would visit the family in Richmond. But I'm not sure grandpa would have let either of them in the house, had they not had their customary bushel of Lynnhaven oysters in hand.

While my grandmother, mother and aunts scurried around the kitchen tending to the turkey, the men were drinking whiskey neat and slurping raw oysters on the porch. All of us cousins would chase each other around outside and occasionally stop to check in on the oyster orgy.

Once, I saw my grandfather pop a live oyster crab in his mouth and I vowed I would never, ever, eat an oyster.

How things have change.

Moving to Virginia Beach as a grownup, I became aware early on of the Lynnhaven oyster's reputation and how kings, queens, Diamond Jim Brady and more fancied them as delicacies.

When I began working for the Virginian-Pilot, I often wrote about the city's history, its environment and its delicious produce and seafood. Oysterman, Capt. Irvin Evans, who passed away in the 1990s, represented the best of all three and I interviewed him many times. You could see his beautiful inter-tidal oyster beds on the Eastern Branch of the Lynnhaven when they were exposed at low tide.

He once told me that the difference between any oyster and a Lynnhaven oyster was like the difference between chalk and cheese. Sweet Lynnhavens also had a salty tang from the nearby ocean, he said.

Sadly, many of our conversations where about how Virginia Beach had grown and how the Lynnhaven was becoming too polluted for oysters and that many were dying off from disease. By the late 1980s, the river was closed to commercial shell fishing and Capt. Evans retired.

As a farewell gift of sorts before he retired, Capt. Evans shucked a quart of Lynnhavens for me and I shared them with Andy and Barbara Fine.



2010: Athey Reef Constructed



I like to think that night of fine eating and reminiscing might have been one of the sparks that spurred Andy on to become one of the founders of Lynnhaven River Now. I know that Capt. Evans would have liked that thought too.

In the decade that followed, the City of Virginia Beach, citizens, environmental agencies and organizations began to understand how badly the river had deteriorated and began efforts to restore it.

Capt. Evans' beautiful oyster beds became a sanctuary reef where the Virginia Marine Resources Commission and the Chesapeake Bay Foundation grew oysters to help clean the river and seed other reefs around Virginia. Andy and two good friends, Harry Lester and Bob Stanton, put their heads together and in 2002 created a group, bringing everyone together. They called it Lynnhaven River 2007 to focus on eating an oyster from the river in 2007. At that point only 1 percent of the river was safe for edible oysters.

I was lucky enough to be included in the planning along with an amazing group of interested individuals and representatives from the city, the Chesapeake Bay Foundation and other environmental groups.

I remember breakfast meetings at Dockside to plan our strategy. We had a tiny office that Andy gave us at Runnymede. Barry Frankenfield with the city was our first part-time director followed by Laurie Sorabella and then Karen Forget who continues today as our fulltime director.

The city began working to get river residents off septic tanks and onto city sewer lines. We began education efforts. We learned that up to 30 percent of the bacteria in the river could be from dog waste which was washed by rain into storm drains and into the river from all over the northern part of the city. We created a scoop the poop campaign to educate residents about cleaning up after their dogs. And we created our first Pearl program, Pearl Schools.

In 2007 we were able to establish the river as a No Discharge Zone for boats, the first tidal river in Virginia to have that designation! That same year at our oyster roast, amid cheers and toasts, Rob Brumbaugh from the Chesapeake Bay Foundation ate an oyster from the Lynnhaven!

Then there was no stopping us. We renamed ourselves Lynnhaven River NOW with "now" stressed in all capitals. The rest is more recent history. Program after program, from regular river cleanups to Pearl homes, and faith groups were established. Oyster reefs and buffer gardens were built. Oyster farms and businesses were established. And now we also are taking many of these programs to all the waterways in Virginia Beach.

This year, we are celebrating our 20th anniversary and about 50 percent of the river is open to shell fishing. And these days, I am the one taking a cooler full of oysters every Thanksgiving and Christmas to my family in Charlottesville.

## Communications

We are sharing one of the recent Nature Notes blogs with you here and hope that you will enjoy it and go to our website and subscribe today so a new blog can come to your email each weekend.

During the past two years, we have sent out more than 1,000 messages on our various platforms. And 5,000 of you are receiving our electronic newsletters. During the past two years, we have also created an LRNow YouTube Channel where you can find a variety of interesting videos.

One of the ways that we have adapted to the restrictions of covid is to find new and creative ways to communicate with you while we have been apart. During the past two years, we have improved our website and started our weekly Plant for the Future E-Blasts to keep you up to date on all that is happening. We have continued our monthly E-News with an advocacy focus; increased our regular posting on Facebook, Twitter, Instagram, and Linked-In; and launched our weekly Nature Notes blog. All with you, our members and supporters, in mind.





## Tree Planting and Notable Trees

Trees provide so many benefits. They clean the air and provide food and shelter for many birds and animals. They store water and help control flooding. They cool our homes and protect us from wind. And they make our neighborhoods more beautiful.

In 2020 and 2021, with over 1,500 hours of volunteer help and the support of the Virginia Department of Forestry, the Malbon Family Foundation, and the Camp Younts Foundation as well as our own Kenneth Grief Tree Fund, we were able to plant 750 nice sized trees in the common areas of Ocean Lakes. These trees will provide all of the functions listed above and, over time, they will transform the neighborhood.

In the coming year, we have tree planting projects planned in Green Run, with Equi-Kids, and in partnership with Old Dominion University and Norfolk State University at their Virginia Beach campus. Watch for opportunities to contribute and to volunteer.

The senior mature trees in our city are our history. Some were youngsters before the Europeans came to Virginia. Through our Notable Tree program, we have identified 142 spectacular older trees and are helping to honor and protect them. If you know of a tree you think might qualify, please contact us and we will check it out.





## Conservation Landscaping

Conservation Landscaping is a key to good watershed management. We know that everything that happens on the land affects water quality.

Our Pearl Faith Communities, our Pearl Businesses, our Pearl Homes, and our Pearl Schools are all implementing conservation landscaping practices on their property. They are planting trees and native plants. They are controlling drainage and run off with rain gardens, rain barrels, and infiltration trenches. And they are learning how to create and manage living shorelines that provide critically important habitat and connect the land to the water in a natural way.

During the past year, even more people have stepped up to do these important projects. Many of these projects were made possible by volunteers, donated materials and tools, as well as property owner contributions.

Through our Sustainable Yard Program, in the last four years, we have done 357 site visits and completed 217 projects including rain gardens, infiltration trenches, rain barrels, and lawn plans. Thank you for all the great things you are doing!





## Donors

*Hats off to our donors! Without you our work would not be possible. Thank you for everything you do to support LRNow.*

### LEADERSHIP - \$40,000 AND OVER

Contrell Contracting Group  
Bob & Janice Wells  
National Fish and Wildlife Foundation  
City of Virginia Beach  
Dominion Energy  
NOAA/Atlantic States Marine Fisheries Commission

### LEGACY - \$20,000 - \$39,999

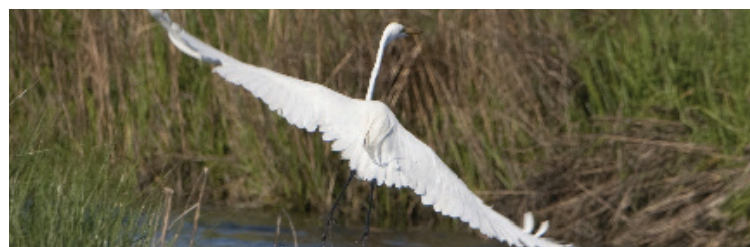
Bay Island Yacht Club Fund of HRCF  
Camp Younts Foundation  
Dollar Tree  
Andrew & Barbara Fine  
Floyd E. Kellam Jr. Family Fund of the HRCF  
John & Harriet Malbon – Malbon Family Fund  
Harry & Dee Lester

### SUSTAINING - \$10,000 - \$19,999

Chesapeake Bay Restoration Fund  
Virginia Department of Forestry  
Susan B. Day  
Dave Jester

### SUPPORTING - \$4,000 - \$9,999

Atlantic Seafood  
Joan Brock and The Brock Foundation  
CG2 Fund of the HRCF  
Jan Dillard  
David Earl  
Joanna Fowler  
Steve & Sally Herbert  
Brent & Chris James  
Richard Thurmond & Patricia Jennings  
Preston & Catharine White Foundation  
Gene & Sharon Ross  
Runnymede Corporation  
Annie & Art Sandler  
Jim & Karen Sparks  
Jim & Joan Spore  
Stihl, Inc.  
REI  
Ken & Shirley Sutton  
Bob & Marion Taylor  
The Atlantic On Pacific  
The Meridian Group  
Richard & Barbara Wilson



### PEARL - \$2,000 - \$3,999

Bob & Sara Atherholt  
Mary Reid Barrow  
Bob & Tess Bradlee  
L. Clay Camp Jr.  
Hap & Becky Chalmers  
Louis Cullipher  
Keith & Kim Curtis  
Dennis R. Deans  
Jack Drescher  
Ann Farley  
First Landing Financial  
Peter Fisher  
Karen Forget  
Barry & Patti Frankenfield  
Franklin Family Foundation  
Taylor Family Fund of the HRCF  
Bill Gambrell  
Jane Anne Murphey & Alan Gibbs  
Lillie & Joe Gilbert  
Nancy Boyd & Donald Gratton  
Great Outdoor Provision Co.  
Zeb & Beth Holt  
Anne Jett  
Ann Korsak

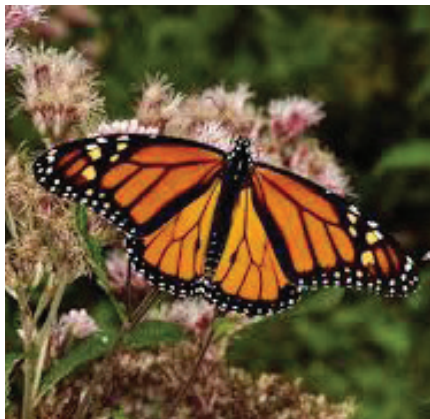
Alexandra Laramée  
Bill Wells & Susan Lyon  
Brian & Patricia Maddox  
John & Ruth Mattin  
Tim & Renee McCarthy  
Ronald & Terri McIntosh  
Colin, Patt, and Oriana McKinnon  
Michael J. Barrett Fund of the HRCF  
Peyton and Leslie Neatrou  
Ocean Park Civic League  
John & Julia Parker  
Pender & Coward PC  
Barbette Timperlake & Bob Perrine  
PRA Group Inc.  
Queen of Virginia Skill & Entertainment, LLC  
Richard & Martha Glasser Family Foundation  
Louis & Pru Ryan  
Elizabeth Satterfield  
Larry & Carolyn Sutton  
Sykes, Bourdon, Ahern & Levy, P.C.  
The Breeden Company  
John & Nancy A. Watters Jr.  
Merry & Tom Watts  
Wheelabrator  
John "Dubby" & Susan Wynne



### REEF- \$1,000 - \$1,999

Jane Batten  
Beck Roofing Corporation  
Debbie Blankman  
Kitty Boshier  
Bruce & Lilly Bradley  
William Campbell  
Charlotte Caplan & Michael Brubaker  
Johnny & Janet Ellis  
Bill Ford  
Steve Frazier  
Valeria M. Genta  
Adrienne Goodman  
Harvey Lindsay Real Estate  
Jerry J. Wilson Memorial Foundation  
Robert K. Fuchs





Stephanie B. Jones  
 Bob Kerr  
 Ingolf & Anne Kiland  
 George Kotarides Jr.  
 Kroger  
 Law Offices of Richard Serpe  
 John & Ruth Martin  
 Cathy Maston  
 Jim and Lisa Metcalfe  
 Jerrold L. Miller  
 Michael Minter  
 Alexandra Oglesby  
 Susan Pender  
 Mark & Janis Prock  
 Admiral & Mrs. Joe & Suzanne Prueher  
 R. & C. Dickerson Family Fund of the HRCF  
 Durk & Kathy Rigney  
 Tom & Rebecca Robinson  
 Lynn & Peter Schultz  
 Kay Shiflett  
 Anthony & Allison Sitar  
 The Vandeventer Foundation  
 Bob & Pam Thornton  
 Chrystian Uzzle  
 Virginia and John L. Sinclair Foundation  
 Anthony & Elizabeth Vittone  
 Dr. & Mrs. Robert Waddell  
 Ware Insurance  
 Wegmans  
 Howard Weinberg  
 Westminster-Canterbury  
 Scott & Pranee White  
 Kathryn Whitten  
 Jarrett Zoby

**OYSTER- \$500 - \$999**  
 Tom & Ann Ackiss  
 Billy & Molly Almond  
 Keith Bangel  
 Tim & Paige Barrow  
 David & Helen Bernd  
 Bluebird Bungalows  
 Vince & Pamela Jacobsen Bow-  
 hers  
 Paige Brage  
 Robert & Laney Brown  
 Alexander & Ellie Campbell  
 Coastal Virginia Unitarian Uni-  
 versalists  
 Commonwealth Brewing Com-  
 pany  
 Craig & Gail Cope  
 CP Shuckers Cafe & Raw Bar  
 James & Ellen Deppe  
 Dockside Seafood Market &  
 Marina  
 Juanita River Felton  
 Matt & Karen Fine  
 Terri Gorman  
 Barbara Gunn  
 Frank & Gloria Gurdziel  
 Rosemary B. Harker  
 Mary Lee Harris  
 Dylan Hawkins  
 Buck & Deb Henry  
 Larry Hester  
 Buzzy & Jo Ann Hofheimer  
 Patricia Hoke  
 Chris & Trista Imrich  
 Ellis & Klara James  
 Bill Jenkins  
 Jim Kail

Huib & Ankie Keizer  
 Anne Kellam  
 Carol B. Laibstain  
 Lake Smith Terrace Garden  
 Club  
 Jim Lang  
 Edward & Ruth Legum  
 Marina J. Liacouras  
 John & Patricia Litz  
 Lucky Oyster  
 Reese Lukei  
 Bob & Donna Magoon  
 Don Mildrew  
 James & Siobhan Miller  
 Gayle Nichols  
 Norfolk Southern Foundation  
 Sandra Nozzarella  
 Kirsten M. Nuss  
 Mary Jo O'Connor  
 Vincent & Patricia Olivieri  
 Molly Owen  
 Tom & Gayle Parseghian  
 Whit Peace  
 Princess Anne Garden Club  
 Robin Ray  
 Philip & Kay Richardson  
 Ron & Donna Ripley  
 Rev. and Mrs. Robert J. Robert-  
 son, III  
 Rockafellers  
 Virginia Cochran & Hugh D.  
 Ruesegger  
 Julia Runyon  
 Lin Runyon  
 Bill & Linda Schafer  
 Dr. Paul Schellhammer  
 Marilyn & WR Shepherd  
 Anne Solomon

Dixie Sommers  
 Southern Branch Nursery  
 St. Gregory the Great School  
 Vanessa Coria Statheros  
 Alan & Brenda Stein  
 Lawrence Steingold  
 Emily Steinhilber  
 Robert Steinhilber  
 David Stockwell, III  
 Mike & Mary Taylor  
 Taylor's Do it Center  
 Jeffrey & Paulina Thompson  
 Frank & Barbara Tierney  
 Tupelo Honey Café  
 Bill & Jody Ullmann  
 William & Sandra Warden  
 Wayne & Ashlin Wilbanks  
 Wild Works of Whimsy  
 Karen Wolff  
 George & Luanne Wong  
 Walter Worrall  
 WPL Site Design  
 Ann Wright

**NATIVE PLANT - \$200 - \$499**  
 All Saints' Episcopal Church  
 Chris & Deborah Anuswith  
 Patricia Arant  
 Gay Aridas  
 Robyn & Curtis Bailey  
 Chris & Terri Beale  
 Claire Beasley  
 Dave Belote  
 Michael Berlucchi





Charles W. Best, III  
 Rich Boylan  
 Don Bray  
 Jill Nickel Broome  
 G. Michael "Mike" Brown  
 Ty & Penny Brown  
 Gale Bryant  
 John & Rebecca Bryant  
 Joe & Susan Buchanan  
 Daniel & Ginny Burke  
 Mrs. Jean B. Burns  
 Hunter Burt  
 Mark & Gwen Bushnell  
 California Pizza Kitchen  
 Tommy & Miriam Callahan  
 Gigi Calvert  
 Bill & Meg Campbell  
 Norman & Bernadette Carrick  
 Kathy Case  
 Celtic Tree Care

Chesapeake Colony Garden Club  
 Carol & Al Chewning  
 Civic League of Pembroke  
 Meadows & Shores  
 Susan & Shelly Cohn  
 Combined Charities  
 Community Foundation of Richmond  
 James & Katharine Clark  
 Clevidence Wurster Fund  
 Becky W. Conner  
 Cara Cotter  
 Michael & Kat Coughlin  
 CP Shuckers Bayside  
 Nancy Craft  
 Sperry & Betsy Davis  
 Chantal Dejou  
 Mary & Pod Denny  
 Gio & Chrys Donatelli  
 Michael & Carol Donovan  
 Bruce Doyle  
 Nancy Wells Drury  
 Tom Duckett  
 James R. Early  
 Ron & Jan Eaton  
 Donna R Edmondson



Phyllis Elms  
 Reid & Harriet Ervin  
 Lester & Nina Fabiszewski  
 Joanne Fish  
 Margaret "Page" Fitchett  
 Bill & Teri Fleming  
 Kathleen Fogarty  
 Nancy Ford  
 William Franczek  
 Steven & Nancy Freeman  
 Fred Freeman  
 William & Crystal Fuller  
 F. Dudley & Connie Fulton  
 Michael & Michelle Gauthier  
 Douglass & Patti Gilbert  
 Rosalind Gillett  
 Robert & Sherry Gilson  
 Claudia Gooch  
 Jean Hearst & Dan Graf  
 Charlotte Graham-Clark  
 Julius & Sheila Green  
 Rachel Greenberg  
 John & Gayle Greene  
 Jill Gurley  
 Christine Gustafson  
 Jeff & Debbie Lou Hague  
 Rex & Lisa Hamaker  
 Hal & Elizabeth Hamberg  
 Danielle Hangen  
 Steve Hansen  
 Dana Henning  
 Patrick Herman  
 Stephen A. & Sally M. Herman  
 Anne Heyniger  
 Rich & Lesley Hildreth  
 Robert & Sheryl Holtgreffe  
 Carol Hooker  
 Martha Hortenstine

Neal & Pat Howard  
 Mary Hubbard  
 Sue Beth Hudson  
 John & Frances Huenerberg  
 Betty Anne & Gordan Huey  
 W. Kevin Hunt  
 Jo Ann Hunter  
 Jerry & Barb Imrich  
 Calvin Jackson  
 Edward Jacobs  
 David & Morgan Janke  
 James & Melody Jeffrey  
 Tim & Louise Jeffries  
 Katie Johnson  
 Thomas Johnston  
 Calvin & Connie Jones  
 Louis Ray & Ellen B. Jones  
 Robert and Carolyn Jones  
 Joe & Marianne Judge  
 Junior Virginia Beach Garden Club  
 Jim & Anne Kane  
 Susan Frances Kaufman  
 Tom & Lisa Kennedy  
 Eric & Kerry Kisa  
 Carol Korn-Smith  
 Rick & Helen Kuhns  
 Michael & Gail Johnson Kynett  
 Cathy Crutsinger LaBranche  
 Skip LeGault  
 Betty Ann & Scott Levin  
 Linda Lexier  
 Robert & Margaret Lloyd  
 George Londeree  
 Mark & Roxanne Lottinville  
 Nancy L. Lowe  
 Ludford Brothers Oyster Co.

Rick Lutz  
 Julie MacKinlay  
 Ellis & Marti Malabad  
 Clara Malbon  
 Vince & Suzanne Mastracco, Jr.  
 Bill & Beth McGlooin  
 Eve McGrory  
 Cheryl McLeskey  
 Tom & Lee McMurry  
 Mary Ann McNeil  
 Raymond & Suzanne Michelini  
 Courtney Mickiewicz  
 Victor & Karen Mickunas  
 Walida Miller  
 William & Joan Miller  
 Daryl & Marion Mitchell  
 Thomas Moore  
 Tom & Judy Moore  
 Michael & Carol Moore  
 Ken & Diane Muhlendorf  
 Alyssa & Jonathan Muhlendorf  
 Elijah Muhlendorf  
 Patrick & Pamela Mumey  
 Cara Munker  
 David Netherton  
 Sharon & Ron Nieto  
 No Frill Bar & Grill  
 Andrew & Trish Northcutt  
 William & Sharon Nusbaum  
 Ocean Eddie's  
 Renee Ellen Olander  
 Adam Olver  
 Carolyn Osmond  
 Deborah Otis  
 Constance Owen  
 Lee B. Parker  
 Susan Parker

2015: Opened an Office in the Brock Environmental Center

Deborah Paxson  
 John Payne  
 Patti C. Perry  
 Margaret & Vic Pisone  
 Elinor Sue & Christopher Poe  
 Isabel Pollard  
 Juan & Pamela Ponce  
 Robert & Bonnie Prestridge  
 Bill & Caroline Pritchard  
 Rich & Catherine Prutsman  
 Richard & Robin Ray  
 Davis & Elizabeth Reed  
 Bert & Betsy Reese  
 Thomas Rich  
 Jim & Linda Richards  
 John Rivers  
 Jane Rives  
 Nancy Ronald  
 Nicole Rosenblum  
 Jean Ruffin  
 Mr. & Mrs. C. Arthur Rutter, III  
 George & Frances Sadler  
 John & Ann Schmidt  
 Manfred & Ann Schwarz  
 William D. Sessoms  
 Stacey Shiflet  
 Frank Slevin  
 Lawrence Smith  
 Nancy Smith  
 Hannah Sobol  
 Peter Solinsky  
 Linda Spindel  
 Steve & Kathleen Stasulis  
 Brooks & Darcel Stephan  
 Michael & Dee Sterling  
 Jay & Brooke Stotlar  
 Margaret Stouffer  
 Melissa Summers

Dave & Lydia Sweeney  
 Howard & Leigh Sykes  
 Frankie & Billy Sykes  
 H.S. Tate  
 Jack & Linda Taylor  
 Peter & Jo-Anne Tempest  
 Patricia Terry  
 The Adventure Park at Virginia  
 Aquarium  
 The Beach Bully BBQ Restau-  
 rant  
 Tidewater Wooden Boat Work-  
 shop  
 Hugh Tierney  
 J. Garland Tillery  
 Milton & Belinda Torres  
 Guy Tower  
 Jean Tyner  
 Ronald Underwood  
 Jim & Mahala Vail  
 Sid & Wendy Vaughn  
 Betty & Jim Villers  
 Virginia Association for Envi-  
 ronmental Education  
 Virginia Native Plant Society -  
 SHR Chapter  
 Captain Richard M. Vizzier  
 Bill & Neola Waller  
 Joe & Eileen Walsh  
 Reginald C. Ware  
 Charles Weigand  
 Jeffrey Werby  
 William & Christine Westendorf  
 Mike & Ashley Wilcox  
 Bob Williams  
 Williamsburg Winery  
 Leroy & Cathy Williamson

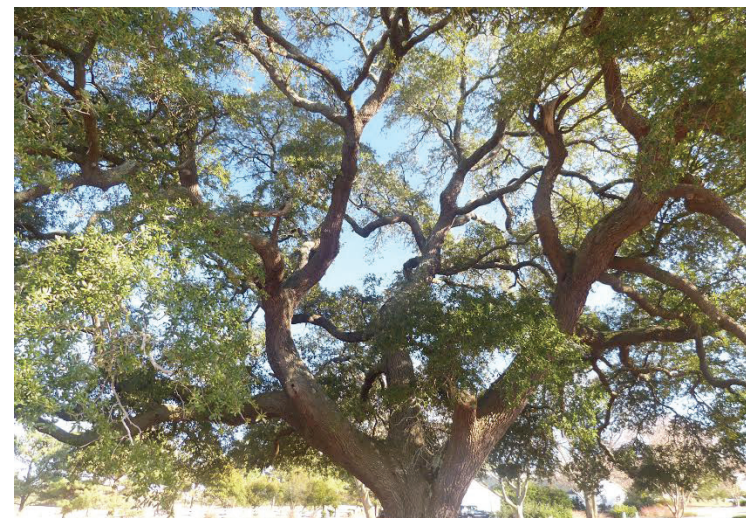
John Wilson  
 Rosemary Wilson  
 Dix & Jane Wolcott  
 Thurman & Mary Worthington  
 Kimberlie Young  
 Dave & Joanne Young  
 Connie Zuidema

### Members - up to \$199

1608 Crafthouse  
 Abbey Road Restaurant  
 Ruth "Ann" Abrams-Hammett  
 Fred & Frances Adams  
 Robert Adkisson  
 Lillian Akers  
 David P. & Diana S. Albis  
 Brenna Alexander  
 Bob Allen  
 Alec & Mary Allen  
 Tade Allen  
 James & Elizabeth Allen  
 Harry Allen  
 Leslie Allman  
 Laura Alspaugh  
 Lynn Amann  
 Serena Amerson  
 Nancy Andrews  
 Kandice Angel  
 Nicole Ardoin  
 Nancy Arias  
 Mike & Marilyn Ashe  
 Joseph & Virginia Avoli  
 William Ayres  
 Robyn Bailey  
 Jill Bainbridge  
 Will Baker

Elizabeth Balcar  
 Gary Ball  
 Veronica Balzer  
 Lee Bandy  
 Lizzie Bankowski  
 Darlene Banks  
 Craig Barber  
 Susan Barco  
 Ken & Kathi Barefoot  
 Alex & Lauren Barkan  
 Walter A. Demmerle & Michele  
 Barnes  
 Arthur & Janet Bartlett  
 Laura Bayer  
 Bayville Golf Club  
 Denise Becker  
 Katy Bede  
 Bruce & Joan Berlin  
 Cami Best-Jones  
 Meredith Blackman  
 Terry Blevins

Rebecca Bloom  
 Deborah & Dave Bodsford  
 Patrick Bonar  
 Bogi Bora  
 Emma Boston  
 Steven Scott Bottle  
 Robert Bowman  
 Sue Bowser  
 Camm Boyd  
 Bill & Beverly Boyer  
 Dr Ryan Boylan  
 Mary Jo & Alex Bradley  
 Margaret Bradley  
 Mark Bragg  
 Jeanine Breault  
 Betsy Brichter  
 Pat Briggs  
 Susan Brittingham  
 Broad Bay Island Garden Club  
 Susan Broaddus  
 Anne D. Brockenbrough







Laurel Brookes  
Courtney Brough  
Lauren Brown  
Mary Perkins Brown  
Christine Brugh  
Joe & Julie Brunner-Gaydos  
Donna Bunton  
Richard & Beverley Burchette  
Connie Burgess  
Gunilla N. Burke  
Karen Burns  
Bob Burns  
Diana Burson  
Brenda Butler  
Butterfly Society of Virginia  
Sean Byrne  
Cathy Callahan  
Mike Callan  
Terri Campbell

Jill Campbell  
John Campbell-Brockman  
Sandra Canepa  
Captain George's Seafood  
Carola Carlisle  
John & Jeanne Carlock  
Marianne Caro  
Troy & Dustie Carpenter  
Glenn & Lynn Carwell  
Cindy Caskey  
Nancy Castle  
Catholic High School  
Robert W. Catlin Jr.  
Peggy Caverly  
Carolyn Caywood  
Frank & Charlotte Chagnon  
Kelleigh Chapel  
Robin Chapman  
Cynthia & Dave Chapman

Ernie & Joyce Chapman  
Warner Chapman  
Charlestowne Garden Club  
Chesapeake Bay Distillery  
Chix on the Beach Restaurant  
William Chorey  
Faith Christie  
Jim & Carole A. Christopher  
Church Point Garden Club  
Bob Carroll  
Karen Cifranick  
Cinema Cafe  
Betty Clarke  
Steve Clayton  
Sherry Clem  
E.W. & Catherine Clextion  
D. Cohen  
Isa Cohen  
Tim Cole  
Nancy Cole  
Grace Colombara  
Danielle Colucci  
Susan Compton-Lowe  
Carol Conaway  
Matt Conner  
Pat Connor  
Mark D. Connolly  
Jairo & Loraine Cook  
Bill & Linda Cooke  
Christian & Jennifer Cool  
Frank & Roberta Cool  
Jim & Anita Cooney  
William & Eileen Cooper  
Jessica Copeland  
Laura Costello  
David & Nadine Costenbader  
Pete & Ann Costenbader  
Doreen Cote

Steve Cotthaus  
Paul & Rena Coughlin  
Tara Council  
Bill & Jeanne Evans Cox  
Les & Carrollyn Cox  
William A. Cox III  
Penny Crawford  
Mary Crell  
Croc's 19th Street Bistro  
Peggy Cross  
Jo Anne Crouse  
Crowder Construction Co.  
Mary Crozier  
Kay & Maurice Cullen  
Shelby Culver  
Lori Dabul  
Carol Webb Darden  
Ben & Katie Davenport  
Steve & Lyn Davidson  
Rebecca Davidson  
Robin Davis  
Sylvia Davis  
Shonda Davis  
Julie Davis  
Jenny DeArmond  
Sharon Debb  
Peter DeMane  
Dave & Betty Demko  
John & Paula Demosthenes  
Martha Dennis  
Dominique and Brian Denson  
Russell Deppe  
Tammy Desnoyers  
Ann Michele DeTorres  
John Deuel  
Kathleen Devereux  
Amy Dickinson  
Robert Diederich

John & Carolyn Dittrick  
Patricia E. Dolan  
Matthew Donaldson  
Barry Dorsk  
Charles E Douglas, Jr  
Dough Boys  
Bruce & Debbie Drees  
George & Terry Driscoll  
James & Cheryl Driver  
Donna Iona Drozda  
Robert Drury  
Kevin Du Bois  
Kevin & Kathi DuBois  
Mac & Holly Duff  
Barbara Duke  
Doralece Dullaghan  
John & Marguerite Duncan  
Russell & Margaret Dunnington  
Gillian Durham  
Annemarie Durkin  
Steve & Betsy Durrant  
Somphit Dye  
Paula Echols  
Edgar Cayce's ARE  
Kathy Edwards  
Gray & Debi Edwards  
Katherine Edwards  
Jane K. Eilertsen  
Sheila Eldridge  
Barbara Ellis  
Hollis & LaVonne Ellis  
Julia Engelund  
Dorinda Ennis  
Reid Ervin  
Jewell Esposito  
Peggy Ettel  
Lisa Eure  
Kemp Ewing



Chris & Laura Faix  
 Richard & Janice Felker  
 Diane Fener  
 Lauren Fenn  
 WL & Nina Fenska  
 Ginger & Jim Ferris  
 Arthur Edward Fichter IV  
 Lawrence & Charlotte Field  
 Liz Figari  
 Mike & Blair Fine  
 Mark Fink  
 Madeline Finney  
 Rosemary Flamman  
 Beverly Flaschentrager  
 Rick Fleming  
 Chris Ford  
 Gina Foresta  
 Chris Forget  
 Nathan Forget  
 Ian Forget  
 Sharon Forni  
 Robert Foxwell  
 LaFrancis & Denis Francis  
 Rita Frank  
 Laura Frank  
 Gina Fratiani  
 Meg & Bill French  
 Bob & Sue Frey  
 Bee Friedlander  
 Brian & Inger Friedman  
 Friends of Live Oaks  
 Susan Gabrielson  
 Ming Gao  
 Emily Gardner  
 Ted Gardner  
 Eric Garner  
 Barbara P. Gelzer  
 Jim & Margaret Gentry



Frances Germanos  
 Sara Gettings  
 Mery Ghattas  
 Deborah Gibbs  
 Emily Jean Gilbert  
 Eliza Gilbert  
 Martha Girolami  
 Tara Golden  
 Christina Gondusky  
 Good Coin Foundation  
 Dave & Betsy Goode  
 Sandy Graham  
 Ellen Graham  
 J. Segar Gravatt  
 Terry Gray

Nancy Greene  
 Theresa Grey  
 Linda L. Griffin  
 George & Karon Grinnan  
 James Groves  
 William & Dorsey Gurley  
 Maria Gustafson  
 Ellen Gustafson  
 Chuck & Michelle Guthrie  
 EQUI-KIDS/EQUIVETS  
 Mike Hall  
 Chip & Lyndsay Hall  
 Tracy Halman  
 Karen Hamilton  
 John Oliver & Sharon Harrell

JoAnne Hart  
 Ken & Cindy Hartfelder  
 Harvest  
 Emily Hatfield  
 Carissa Hawley  
 Christine Hayes  
 Bill & Barbara Ann Hearst  
 Nancy Heflin  
 Eric and Lori Helke  
 Libi Henley  
 Jack Herbert  
 Susan & Rod Hersberger  
 Adrienne Heuer  
 Paul & Lori Heymann  
 Barry Hickman

Cynthia Hiddemen  
 Mike & Cassie Hillian  
 Monty & Thomas Hilliard  
 Joey & Heber Gardeners Him-  
 Mel Wright  
 Kam Hitchcock  
 Leslie Hodeen  
 Lucy Hoessly  
 Mary Anne Hoffman  
 Luree & Henry Holt  
 Dottie Holtz  
 Tom & Patricia Hostutler  
 Jeremy & Maryanne Houghton  
 Kathryn Hourigan  
 Laura R. Houston  
 Laura Houston  
 Kevin Kevin Howard  
 Betty Howes  
 Susan Hubbard  
 Mariya Hudick  
 Rita Hughes  
 Jeanne Hughes  
 Lisa Hulme  
 Lawrence Hultgren  
 Frank Hunt  
 Joann S. Hunter  
 Julie Hurst  
 Karen & Bruce Husselbee  
 Jeffrey Hutton  
 Margaret Inge  
 Tom & Julianne Inglima  
 Mr. & Mrs. John A. Ingram  
 Rachelle Ingram  
 Susan Ippolito  
 J&A Racing  
 James & Martha Jacobs  
 Laura Jacobson  
 Ken & Doris Jobe



Bobbi Johnson  
 Allan & Nancy Johnson  
 Bill & Susan Johnston  
 Arthur Jones  
 David & Karen Jorgenson  
 Maury & Rick Joy  
 Hunder Kacy  
 Allison Kane  
 Jeremy Kane  
 Nicole Karlins  
 Kal & Joni Kassir  
 Helen Kattwinkel  
 Joan Kaup  
 Frank Kay  
 Willie & Gail Kee  
 Carol Keller  
 Betty Kennedy  
 Anne Kenney  
 Peter and Mary Kerr  
 Tim & Sara Kidd  
 Elizabeth Kidd  
 Judi Kiernan  
 Lloyd & Patricia Kimball  
 Donna Kinney  
 Laura Kirkwood  
 Jill Kleine  
 Reed & Kitty Knight  
 Barbara Kocak  
 Robert & Abbie Korman  
 Priscilla & Tony Kostiner  
 Ed Krauss  
 Deborah Kremers  
 Alexis Krenzke  
 Dave Kromkowski  
 Kathrine Kuipers  
 Lilla Kuper  
 Judy & Richard Kyle  
 Oral & Karen Lambert

Dorothy Landreth  
 Mary Lane  
 Arthur Lane  
 Karen & John Lasley  
 James & Judy Laster  
 Patti Lauer  
 Dottie Laverdiere  
 Rebecca Leach  
 Kirkwood LeCompte Caitlin Lee  
 Gary & Patricia Leffke  
 Tommy Leggett  
 Alice Leggett  
 Shannon & Ronnie Leonard  
 John LePine  
 Dorothy Lester  
 Ron & Sue Leta  
 Kent Lewis  
 Marcus Lewis  
 Linda Lilley  
 Little Neck Cove Civic League  
 Tommi Long  
 Madison & Adam Longwater  
 Jackie Longworth  
 Jim Lowe  
 Sarah Lucas  
 Carter & Sylvia Luck  
 Mike & Jennifer Lynch  
 Lynnhaven River Garden Club  
 George & Joy Lyon  
 Mabel Burroughs Tyler Foundation  
 Christine Macchia  
 Jane Carol Maddox  
 Joan Mahoney  
 Jennifer Main  
 Make My Donation  
 Rachael Malbon  
 Lynne Mallory-Winter

Florence P. Mann  
 May Lynn Mansbach  
 C. Denise Maples  
 Grant Marant  
 Susan Marens  
 Edmond & Maureen Marroni  
 Ronald Martel  
 Sandy Martin  
 Michael Mauch  
 Anne & Roy Maurer  
 David & Anne May  
 Alice Leggett  
 Shannon & Ronnie Leonard  
 John LePine  
 Dorothy Lester  
 Ron & Sue Leta  
 Kent Lewis  
 Marcus Lewis  
 Linda Lilley  
 Little Neck Cove Civic League  
 Tommi Long  
 Madison & Adam Longwater  
 Jackie Longworth  
 Jim Lowe  
 Sarah Lucas  
 Carter & Sylvia Luck  
 Mike & Jennifer Lynch  
 Lynnhaven River Garden Club  
 George & Joy Lyon  
 Mabel Burroughs Tyler Foundation  
 Christine Macchia  
 Jane Carol Maddox  
 Joan Mahoney  
 Jennifer Main  
 Make My Donation  
 Rachael Malbon  
 Lynne Mallory-Winter

Florence P. Mann  
 May Lynn Mansbach  
 C. Denise Maples  
 Grant Marant  
 Susan Marens  
 Edmond & Maureen Marroni  
 Ronald Martel  
 Sandy Martin  
 Michael Mauch  
 Anne & Roy Maurer  
 David & Anne May  
 May Farm Garden Club of Kingston  
 Marilyn Mayhew  
 Margaret McCabe  
 Mike & Nelle McCabe  
 Fred & Sheryl McCall  
 Paula McCann  
 Mary McCarthy  
 LouEllen McCarthy  
 Whitney McDaniel  
 John & Kathi McGovern  
 Paul McGraw  
 Natalie McIntyre  
 Jennifer McKendree  
 Dave & Ann McLaughlin  
 Sande McLaughlin  
 Karen McMillen  
 Betty Jean McMurrin  
 Mary McMurry  
 Clare McMurry  
 Ali McNaught  
 Stephanie McSweeney  
 MEDIC  
 Donna Meeks  
 Mello Beans Coffee Co.  
 Susan Meredith  
 Mermaid Factory

Margaret & Kevin Merritt  
 Lin & LouAnne Anne Metzger  
 Jennifer Metzger  
 Roy & Katherine Meunier  
 Tom & Melodie Middlebrooks  
 Joe Mihlo  
 David & Beth Miller  
 Matt Miller  
 Merle Mills  
 David & Trish Mims  
 Sue Mitchell  
 Judy Moebus  
 Lorraine Moore  
 Jeff Moore  
 Earl & Helen Morris  
 Jackie & Susie Morris  
 Kelly Morse  
 Suzanne Moss  
 Larry & Penny Moulis  
 Lela Mullins  
 Empsy Munden  
 Martin Murray  
 Ann Murray  
 John Murray  
 Craig Myers  
 Marc Neal  
 Chuck & Mary Ann Neihart  
 Eileen Neill  
 Phyllis Neumann  
 Marrian Michael  
 Meredith Nicholson  
 Ralph & Pam Northam  
 Pedro & Deborah Nunez  
 Brittany Nunnally  
 Bill Oberndorfer  
 Mike & Cris O'Brien  
 David & Jessica O'Connor  
 Kathleen O'Connor



Mary Ojo-Carons  
Wayne & Marie Old  
Old Donation Church  
John Olivieri  
Gregory Ott  
Anne Overman  
Jan Pace  
Abbey Pachter  
Sylvia Pakradooni  
Jennie Lou Pangle  
Cindy Pare  
Maria Parker  
Brittany Parr  
Cindy and Michael Parseghian  
Shirley Patterson  
Janet Pawlukiewicz  
Jane Pellegrino  
Keren Pernini  
Kathryn Peterson Lambert  
Cheryl Petticrew  
Ann Pettingill  
William & Aileen Petty  
Courtney A. Pharr  
Angela Pimental  
David Plantz  
Sue Polini  
Isabel & Kenneth Pollard  
Richard Poole  
Jackson & Bernice Pope  
Elizabeth Portner  
Betsy Powell  
Alexandra Powell  
Cheryl Price  
Walter & Barbara Priest  
Tom & Karen Prochilo  
Jay Prock  
Lisa Prough  
Wendy & Bill Quinn

Patricia S. Quintin  
Janet & Jim Ramsey  
Kristin Rankin  
Tim Rapine  
Buddy Redfearn  
REI  
Shawn Reid  
Carmela & Lyn Reid  
Arlene & Jack Rephan  
Courtney Rheins  
Chris Richeson  
Kathleen Ricketts  
Dan and Nancy Ries  
Jakki & Jimmie Rightmeyer  
Linda & Terry Ritter  
Tanya Rivers  
Sarah Roberts  
Kirsten Roberts  
Frances Robins  
Janice Robinson  
Molly Rodgers  
Rueben & Judy Rohn  
Wendy Rose  
Dr. Amelia Ross-Hammond  
Cynthia Royes  
Bruce & Ellen Ruddock  
Rudee's Restaurant & Cabana  
Bar  
Richard Rudibaugh  
Emily Rudiger  
Charlie Russ  
Anne Russell  
Jessica Ruthenberg  
Warren & Karen Sachs  
Stacey Salant  
AJ Saunders  
Beverly Sawyer  
Wayne & Theresa Sawyer

Kathe & Joe Scalf  
Aida Schimmel  
David Schippers  
David Schleck  
Curtis & Diane Schmidt  
Kurt & Deborah Schroeder  
Jenna Schwencke  
Lon Scofield  
Brian Scott  
Carolyn & Bill Scullion  
Eileen Seeley  
Werner & Marianne Seibel  
Carla Serex  
Marilyn Sgrecci  
Patti & Lee Shawn  
Alice Shepard  
Windsor "Ken" Shewbridge  
Diana Shocket  
Martha Shore  
Matt Shorrock  
Carol Shrader  
Signature Management Corp.  
Signmasters  
Paige Simmons  
Carin Simon  
Simple Teen Life LLC  
Elaine Simpson  
Sean Sims  
Ellen & Carter Sinclair  
Dana Sizemore  
Sharyn Sizemore  
Margaret Skinner  
Herman Slutsky  
Macklin Smith  
Wayne Smith  
Jason & Becky Snider  
Brian Solis  
James Solomon



Laurie Sorabella  
Jill Speasmaker  
Betsy Spence  
Dale & Orva Sponaugle  
Josie Sprague  
Caroline Spriggs  
Jim & Lisa Spruance  
Chris Stafford  
Joan Stallings  
Donna Stalls  
Don Stansberry  
Mancha Stanton  
Larry Staunton  
Eric Steentofte  
Steinhilber's Restaurant

Rebekah Sternbach  
Rosely Stevens  
Jane Steyne  
Holly Stoeckeler  
Monica Stone  
Linda Marie Strain  
Stephen & Lynda Strickler  
Jan Stripp  
Cindy Summs  
Alex Sumuel  
Don & Phyllis Super  
Stuart Sutton  
Mark & Lucy Swingle  
Kristen Swingle  
Vivian Swingle

2020: Plant for the Future Communications Program Launched

2019: 100th Pearl School Certified

2020: Ocean Lakes Tree Planting Phase One

Carol Sykes  
 Joe & Paige Takach  
 Nicholas Tempest  
 The Benevity Community Impact Fund  
 The Violet Fox Bookshop  
 Robyn Thomas  
 Hallie Thomas  
 Mary Thomasson  
 Ray Thompson  
 Thoroughgood Garden Club  
 Katherine & Jonathan Thrall  
 Doug Throp  
 Tidewater DSA Eco-Group  
 Tidewater Master Naturalists  
 Phyllis Tilley  
 Toni Tompkins  
 Wendy & Scott Tompkins  
 Diona Torres  
 Tree Stewards  
 Ray & Diana Troiano  
 Jan Trombly  
 Suzie Trotter  
 Michael Tugman  
 Ms. Cheryl Turpin  
 Fielding Tyler  
 Beth Upchurch  
 Jody Urwin  
 Gillian Valentine  
 Ken & Diana Veazey  
 David & Betsy Via  
 Devon Viola  
 Virginia Beach Friends Meeting  
 Virginia Beach Garden Club  
 Virginia Beach Tennis & Country Club  
 Bill & Patty VonOhlen  
 Traci Wagner

Bill & Linda Wahab  
 Chi Yi Chen Wolbrink  
 Dr. Frederic Walker  
 Nancy Walker  
 Kate Wall  
 Duncan Wallace  
 John & Martha Wallace  
 George Walsh  
 Sandra Walton-White  
 David Warstler  
 John Wass  
 Waterman's Restaurant  
 Peggy Watkins  
 Henry & Eleanor Watts  
 Chuck & Carol Weaver  
 Katie Webb  
 Vivian Webb  
 Caroline Webber  
 Jessica Weems  
 Mike & Martha Weirich  
 Barbara Weise  
 Ed and Judy Welp  
 Alexandra Westfall  
 Wetzler Family  
 Kristen Whalen  
 Becky White  
 Fred & Judy White  
 Clyde W. Wilcox Jr.  
 William Wilcox  
 Dawn Wilkinson  
 Elizabeth Williams  
 Sarah Williams  
 Jimmie Koch & Melanie Koch  
 Wills  
 Klee Wilson  
 Allen & Susan Wilson  
 James Vail & Mahala A. Wilson

Patricia Winstead  
 Nicole Wolfert  
 Joseph Woods  
 Patricia Woollum  
 Wayne & Rita Woolwine  
 Christine Work  
 Hope Beecher Wright  
 Sarah Wright  
 Daniel & Suzi Wyckoff  
 Robert & Christina Wyman  
 Heather Wynn  
 Lauren Wynn  
 Bob & Marion Zabot  
 Tarek & Diana Zaki  
 Ken & Michele Zimmerman  
 Margaret Zontini

## IN HONOR & MEMORY OF:

Tom Ackiss  
 Michael Berlucchi  
 Carol Martin Blackman  
 Linwood Branch  
 Macon Brock  
 Jane Brown  
 Russell Burt  
 Hap Chalmers  
 Rebecca Kellam Chalmers  
 Semmes Chapman  
 Warner Chapman  
 Nancy Clark  
 Sue Conkwright  
 Calvert Lester  
 Fred Lowe  
 Don Lowther  
 Reese & Melinda Lukei

George Lyon  
 Kris McKinnon  
 Bob Miller  
 Tina Minter  
 Mr. & Mrs. Moir  
 John Moss  
 Roy Newton  
 Edward Nichols  
 Pam Northam  
 Suzanne O'Donnell  
 Chase Pittman  
 Margaret Reinhardt  
 Rod Rogge  
 Peggy Rommen  
 Aaron R. Rouse  
 Donald Runyon  
 Beverly Jane Slayton  
 Mr. & Mrs. Meaux Thornton, III  
 George Thurman  
 Guy King Tower

Daisy Miller DeCoutres  
 Helen DeRochi  
 Peter Thomas DeTorres  
 Robert M. "Bobby" Dyer  
 Karen Forget  
 Taylor Franklin  
 Joe Gilbert  
 Lillie Gilbert  
 Ian Goodwin  
 Terri Gorman  
 Mark & Joan Helm  
 Barbara Henley  
 N.D. "Rocky" Holcomb  
 Louis Ray Jones  
 Karen L. Wilcox  
 Jane Wilson  
 Rosemary Wilson  
 George M. Webb  
 Robert & Janice Wells  
 Sabrina Wooten





## Coming in 2022



While we have all adjusted and kept going during covid, we are so looking forward to being back together with you!

**Oysters, Oysters, Oysters** — 25 acres of sanctuary oyster reef will be constructed in the Lynnhaven River system!

**Trees and Native Plants** — Gardening and tree planting throughout the Green Run neighborhood in the heart of Virginia Beach.

**New Pearl Neighborhoods** — We are working to double the number of Pearl Neighborhoods throughout the city.

**Environmental Education Opportunities** — Innovative opportunities for teachers in our southern watershed schools to learn about the Albemarle-Pamlico watershed.

**Citizen Science** — Doubling the size of our Spat Catcher program to involve more volunteers and families.

**Reducing Marine Debris** — Introducing a new plastic bag program to reduce waste and debris in our waterways.

**Pearl Faith Communities and Pearl Businesses** — Exciting landscaping, water management, and energy reduction projects.

**Fun new experiences through our Discover Virginia Beach program.**

**And your learning, growing, and getting more involved** — building the best future for our communities.

**20th ANNIVERSARY OYSTER ROAST ON APRIL 23rd**

2021: Ocean Lakes Tree Planting Phase Two

2022: 20th Anniversary

2021: Hit 6000 Pearl Homes



Lynnhaven River NOW  
3663 Marlin Bay Drive  
Virginia Beach, VA 23455  
757-962-5398  
[www.LRNow.org](http://www.LRNow.org)  
[Office@LRNow.org](mailto:Office@LRNow.org)



Designed by Jenna Hinkel